

# The Convent



Stourhead, Wiltshire



# An enchanting and iconic gothic folly hidden in the heart of the spectacular Stourhead Estate

Drawing Room • Dining Room • Kitchen • Cloakroom/Utility • 2 Bedrooms • Bathroom  
Dressing Room/Bedroom 3 with wet room • Summer House • Gardens  
Leasehold

**In all about 0.7 acres**



Savills Salisbury  
Rolfes House, 60 Milford Street  
Salisbury, Wiltshire SP1 2BP  
cstone@savills.com  
01722 426 880





## Situation

The Convent is tucked away in a spectacular woodland setting in the heart of the renowned Stourhead Estate. The fashionable town of Bruton is about 5 miles to the west providing a range of everyday shopping facilities, including the fashionable Hauser & Wirth Gallery, Roth Bar & Grill and At The Chapel Restaurant. Nearby Gillingham offers a Waitrose and mainline station to London Waterloo taking from 1 hour 58 minutes. Both The Spread Eagle Pub or Stourhead Cafe serve excellent local food. The larger towns of Salisbury and Bath provide a more extensive range of shopping and recreational facilities, including excellent Theatre and Arts. Communications by road are good with the A303 about 2.5 miles providing access to London and the motorway network or the west country. Sporting facilities in the area include golf at Bullpits or Sherborne. Racing at Wincanton. Hunting with the South and West Wilts / Blackmore Vale. There is an extensive network of bridleways and footpaths locally. A full range of watersports are within easy reach along the Dorset coastline. The area is renowned for its superb range of private schools including Bryanston, Claysmore, Milton Abbey, St Marys Shaftesbury, Sherborne and Port Regis, Sandroyd, Hanford and Hazelgrove. There are also several excellent Primary and State schools within reach.

## Description

Believed to date from around 1760 with later additions, The Convent is a magnificent Grade I Listed folly built for Henry Hoare as a picturesque pavilion for carriage and riding excursions on route from Stourhead House to King Alfred's Tower. It is constructed from rocky limestone and flint elevations with unusual stone towers under a predominately thatched roof and offers a wealth of interesting features. The drawing room is south facing and has wonderful views of the garden through the gothic arched windows. A particular feature of the room is the original 18th century domed 'pebble dash' ceiling with pebbles from Chesil beach. There are niches located around the room which originally contained painted panels depicting all the orders of nuns. The dining room has flagstone flooring, woodburning stove with gothic themed fire surround with doors opening in to the porch and garden beyond. Situated at the rear of the house is the kitchen which benefits from a range of fitted units, oil fired 2 oven Stanley, 2 ring gas hob, integrated dishwasher, fridge and freezer. A staircase with candle holders that replicate the shape of the towers on the house leads to the first floor. The master bedroom is located above the domed drawing room and features stone mullions and exposed beams. This links to a dressing room/bedroom 3 with wet room. A guest bedroom and bathroom complete the floor.

## Gardens and Grounds

The house is approached via an estate forestry track that winds through Stourhead woodland. There is ample space for parking upon reaching the property from where a paved path leads to the house.

The garden provides a wonderful setting and backdrop for the house and offers a wide variety of interesting shrubs and specimen trees. The main area of lawn, with a paved seating area, lies on the southern side and overlooks the garden which has been created on the slopes beneath.

To the north east of the house is an old game larder which provides useful additional storage. An impressive summer house with veranda has been constructed by the current owner and offers an elevated position from which to enjoy the views over the garden and surrounds.

In all the garden and grounds extend to about 0.7 acres.



### Directions

From London head west on the M3 and bear off onto the A303. Continue past Stonehenge and Mere. At Zeals, exit the A303 signed B3092 towards Stourhead. After about 1.9 miles turn left towards Kilmington Common and Alfred's Tower. Continue along this road and after about 0.8 miles turn left opposite The Old Hunting Lodge signed Alfred's Tower. After 1.6 miles (before you get to Alfred's Tower) turn right in to Alfred's Tower car park. Please meet here for viewings.

### Accommodation

Please see the floor plans for room dimensions and layout.

### General Remarks & Stipulations

Postcode: BA12 6QH (please note that the postcode does not take you to the property so please do not follow your sat nav)

### Tenure

National Trust lease that expires 22nd December 2131

### Services

Private water, electricity and drainage. Oil fired central heating. Solar panels. New Satellite broadband.

### Local Authority

Wiltshire Council, (South) 01722 336272

### Outgoings

The property is subject to Council Tax Band E

### Fixtures and fittings

All items mentioned in these particulars are included in the sale. Items such as fitted carpets, curtains and light fittings are excluded from the sale buy may be available by separate negotiation.

### Viewing

Strictly by appointment with Savills Salisbury Office.

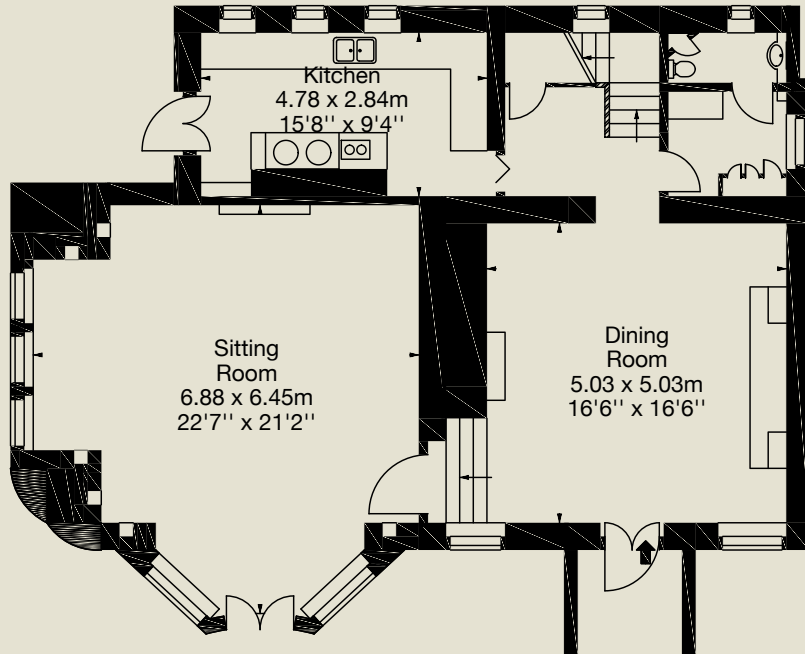
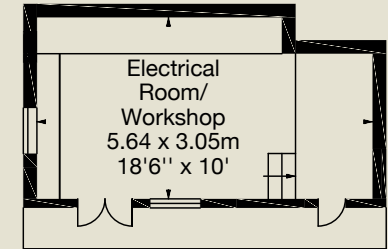
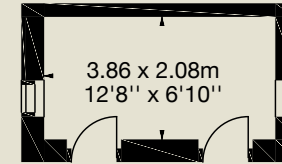
### Important Notice

Savills, their clients and any joint agents give notice that: 1. They are not authorised to make or give any representations or warranties in relation to the property either here or elsewhere, either on their own behalf or on behalf of their client or otherwise. They assume no responsibility for any statement that may be made in these particulars. These particulars do not form part of any offer or contract and must not be relied upon as statements or representations of fact. 2. Any areas, measurements or distances are approximate. The text, photographs and plans are for guidance only and are not necessarily comprehensive. It should not be assumed that the property has all necessary planning, building regulation or other consents and Savills have not tested any services, equipment or facilities. Purchasers must satisfy themselves by inspection or otherwise. 3. The reference to any mechanical or electrical equipment or other facilities at the property shall not constitute a representation (unless otherwise stated) to its state or condition or that it is capable of fulfilling its intended function, and prospective purchasers / tenants should satisfy themselves as to the fitness of such equipment for their requirements. Details prepared: June 2015. Photographs taken: May 2015

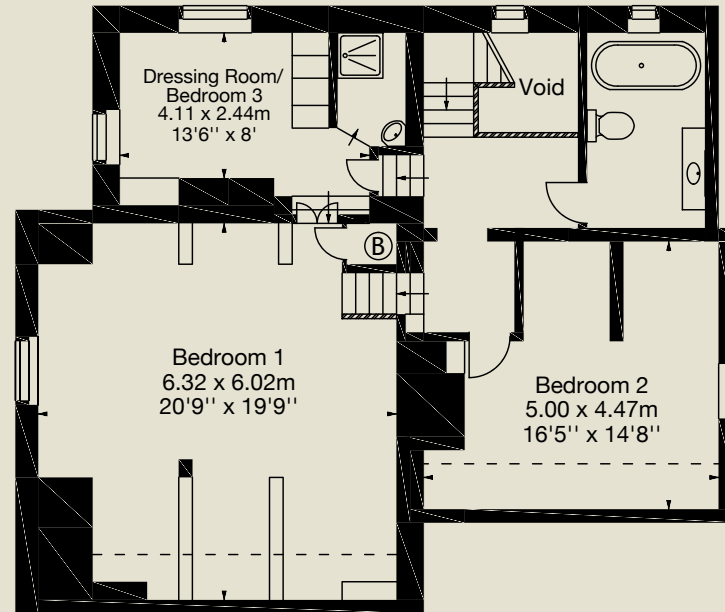


The Convent,  
Stourhead, BA12 6QH  
Approx. Gross Internal Area  
2061 Sq Ft - 191 Sq M

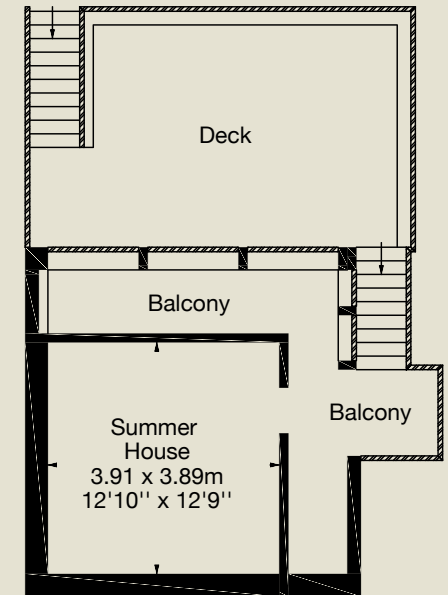
Out Buildings  
Approx. Gross Internal Area  
423 Sq Ft - 39 Sq M



Ground Floor



First Floor





[savills.co.uk](https://www.savills.co.uk)